

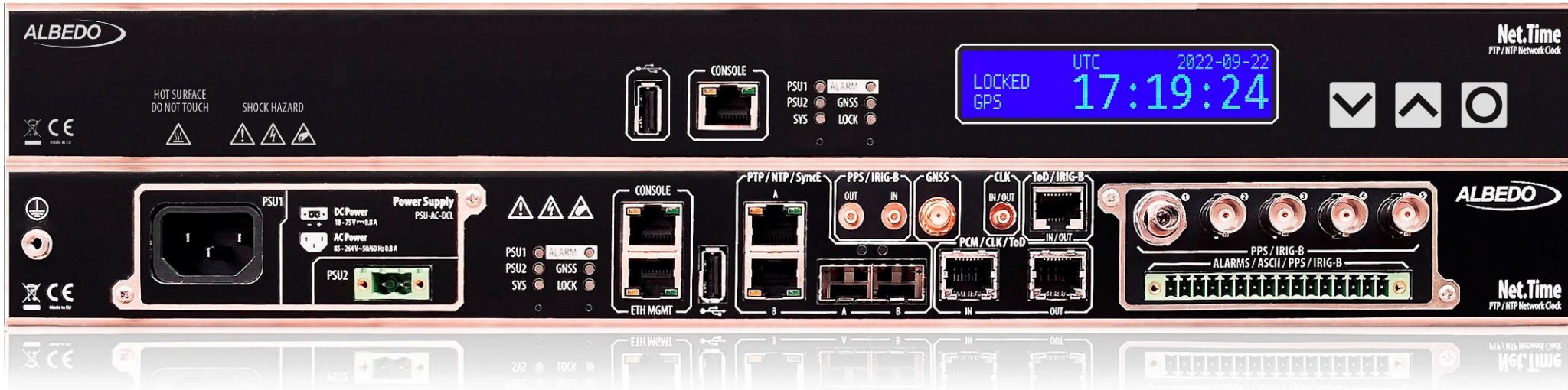
# NMS **SGR-Win**



Network Management System for Net.Time

**ALBEDO**

# Net.Time

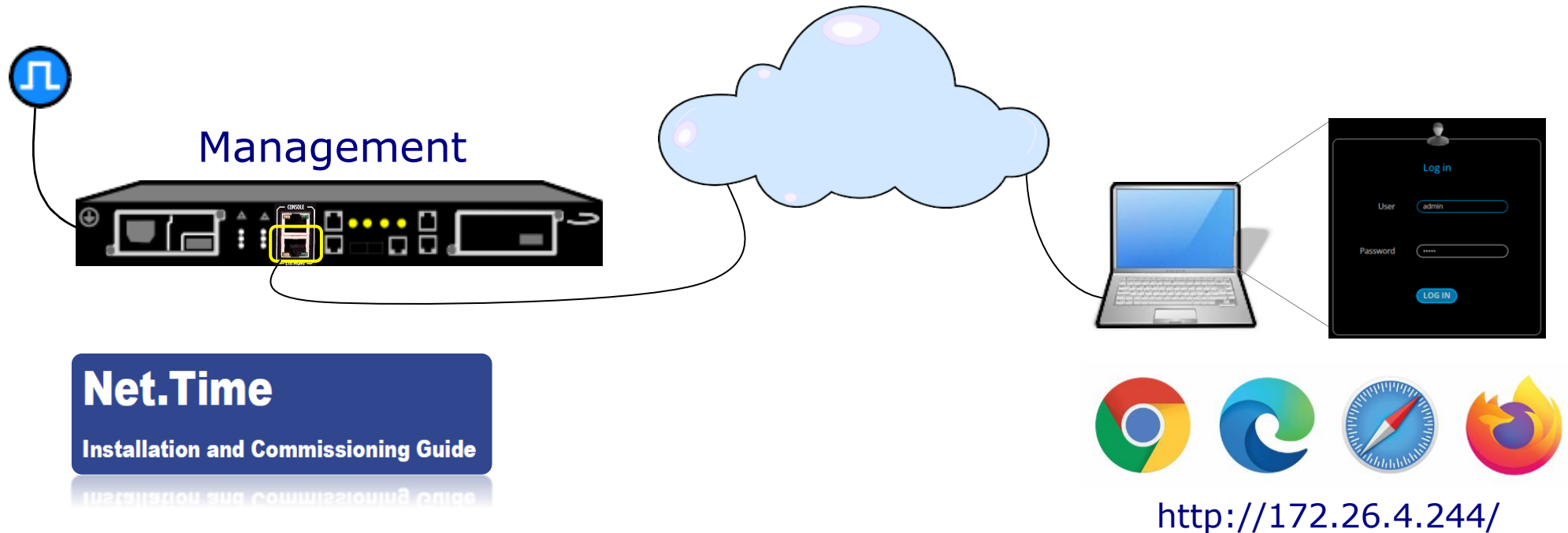


Net.Time is a PTP/NTP/PRP network clock that allows for multiple configurations to meet the timing demands of any industry, including data centres, stock exchange, broadcast, IoT, power utilities, or air traffic control.

Net.Time is a reliable and fault-tolerant solution to loss of reference, network outages and power failures. Simultaneously Net.Time  $\Omega$  simplifies the migration to PTP without abandoning investments in NTP, IRIG-B or BITS, facilitating on this way the integration, interaction and translation of all types of signals, profiles and protocols

# **Native** Management





To run the application from a Laptop type the IP address in the browser. The protocol is HTTP or HTTPS, depending on the configuration.

The application requires credentials (user name + password) then same as CLI and there are three kinds of users:

1. Administrators
2. Controllers
3. Viewers



Unconnected

Log in

User

admin

Password

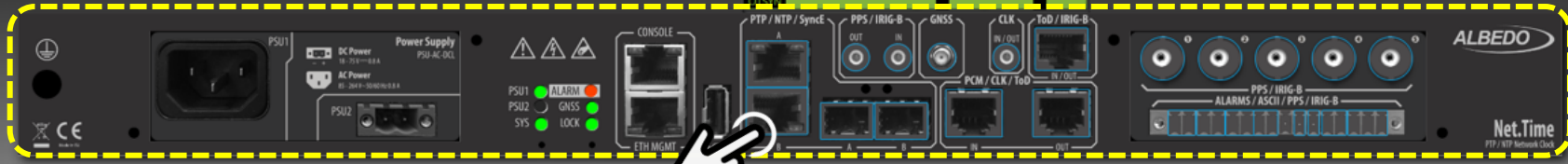
.....

LOG IN

Use the browser

1. Set the IP address
2. User Name
3. Password

The web server tells about the configuration, the status of the timing input / output ports including Ethernet. You can configure and spot the changes.

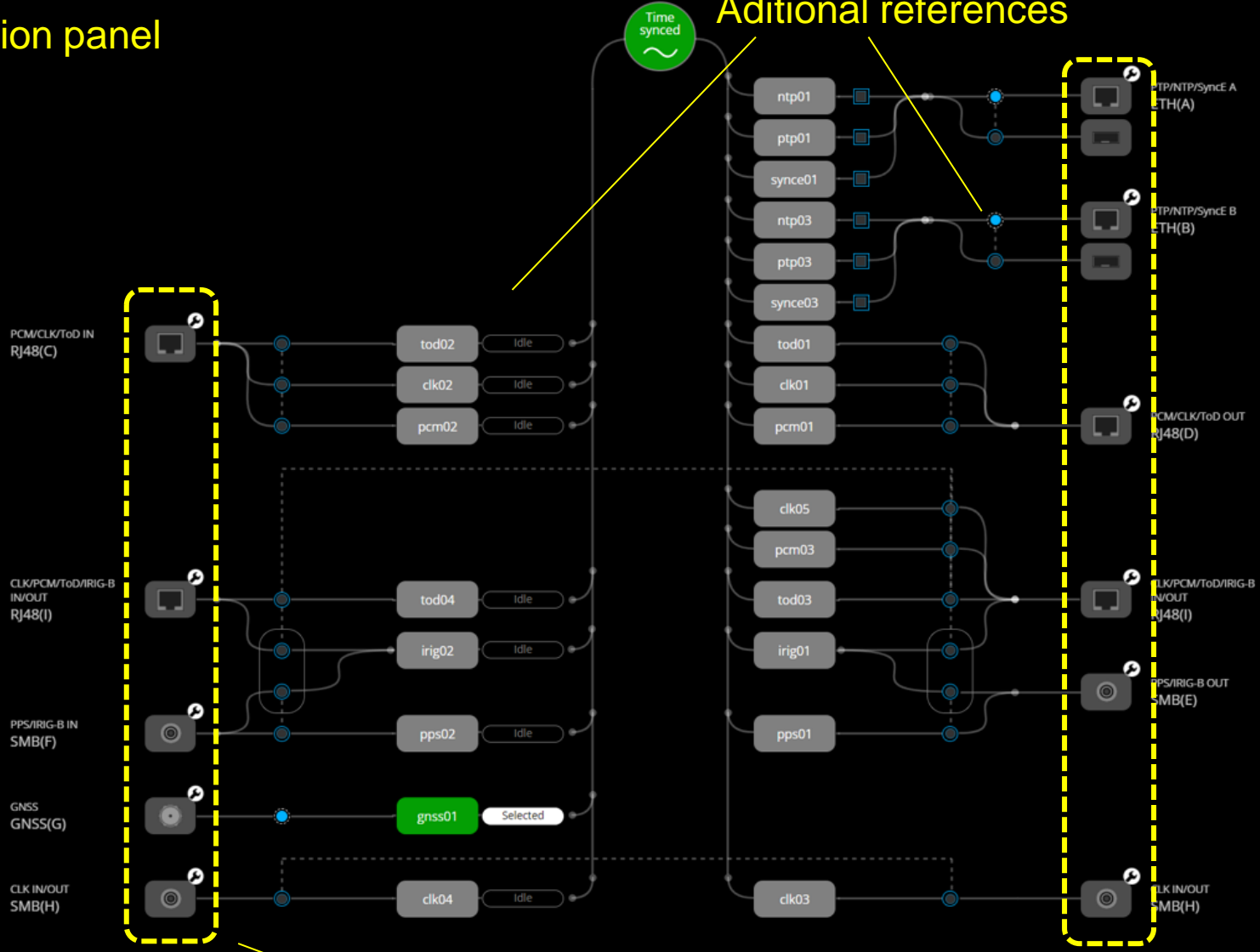


IN

OUT

Front connection panel

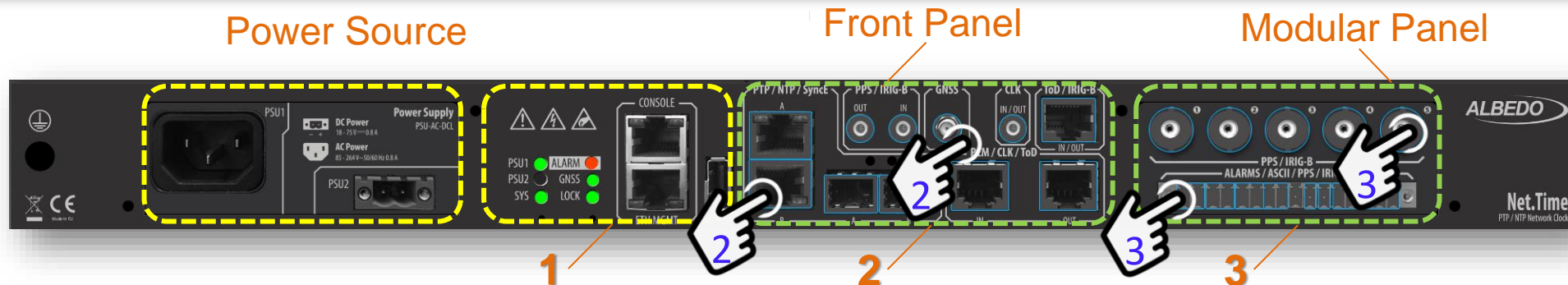
Additional references



Mainframe block diagram

# Mainframe Block Diagram

7



This is a replica of the Net.Time that reproduces connectors, LEDs and other elements. Sub-panels depend on the hardware:

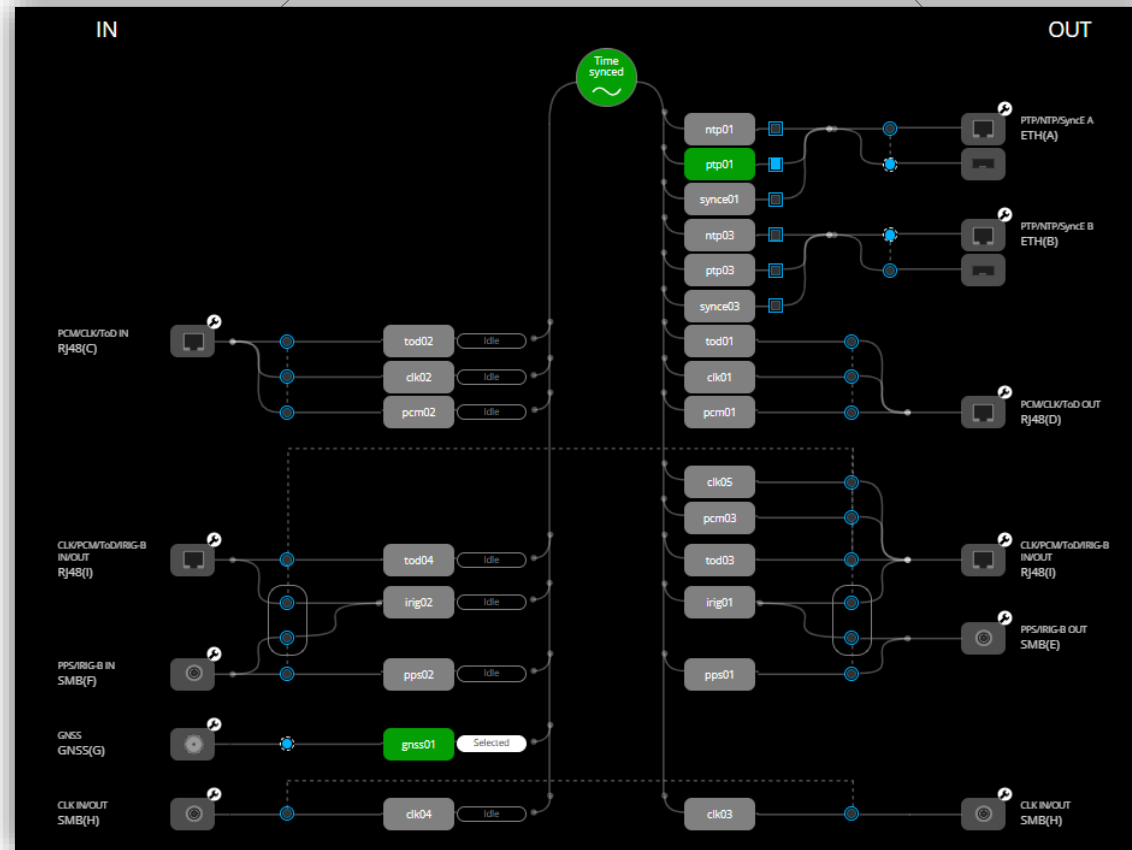
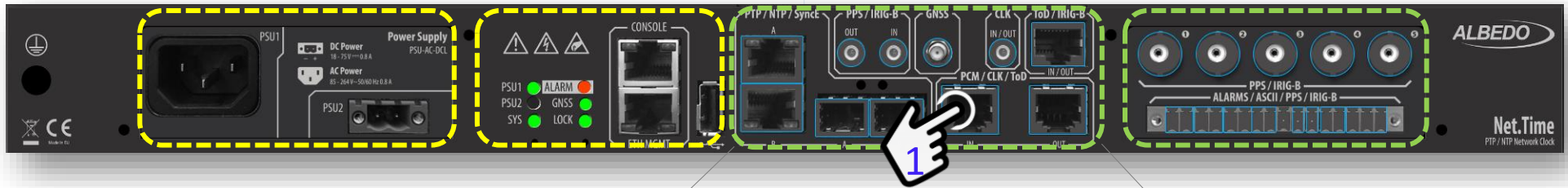
- Power sources
- Time references

There are 3 sub-panels

1. Management connectors and LEDs
2. Front Panel with the Mainframe clock references
3. Modular Panel with the Complementary clock references

You can Click any port of sub-panel 2 or 3 then it will be displayed a diagram that will permit you to know the configuration and change it.

# Front Connection Panel



Some blocks can be inputs or outputs clock references (transmitted or received) other blocks are interfaces which are the clock references themselves.



# **Network** Management System

**F**FAULT  
MANAGEMENT**C**CONFIGURATION  
MANAGEMENT**A**ACCOUNTING  
MANAGEMENT**P**PERFORMANCE  
MANAGEMENT**S**SECURITY  
MANAGEMENT

**FCAPS-based system** for multi-vendor and multi-technology network infrastructure.

**Flexible and modular** ideal for mission critical networks.

**Monitoring of alarms**, status, statistics, inventory, circuits, and performance. allowing for visualization of temporal correlation of events and their impact on services.

**Consolidating the management** of legacy and next generation networks, enabling OT&IT convergence.

**Configuration and provisioning** of E2E circuits, backup history, firmware update.

## OSS - Operations Support System

Service provisioning, fault correlation tools, massive backup execution. All of these and more features!



Operation & Maintenance



Asset Management

## Critical Asset Management

Greater asset visibility and control, improved management, configuration, operation and maintenance processes.

## Network Security

Access control, authentication, DB encryption, reporting, and integration with external cybersecurity systems and more features.



Network Security



Unified Inventory



Systems Monitoring

## Systems Monitoring

Monitor critical network systems, important processes, and essential services within your company's management.

## UMS - Umbrella Management System

A single solution integrating data from systems and monitoring tools, delivering advanced reports, inventory and much more!



Umbrella Management System



Network Management System

## NMS - Network Management System

A product with a strong background, designed for multi-vendor and multi-technology networks that simplifies monitoring and management operations

## **F** FAULT MANAGEMENT

- Network Topology.
- Alarm management and Correlation.
- Ad-hoc Dashboards and reports.
- Asset visualization.

## **C** CONFIGURATION MANAGEMENT

- Asset Configuration
- Asset Auto-Discovery
- Asset Integrator
- Massive operations

## **A** ACCOUNTING MANAGEMENT

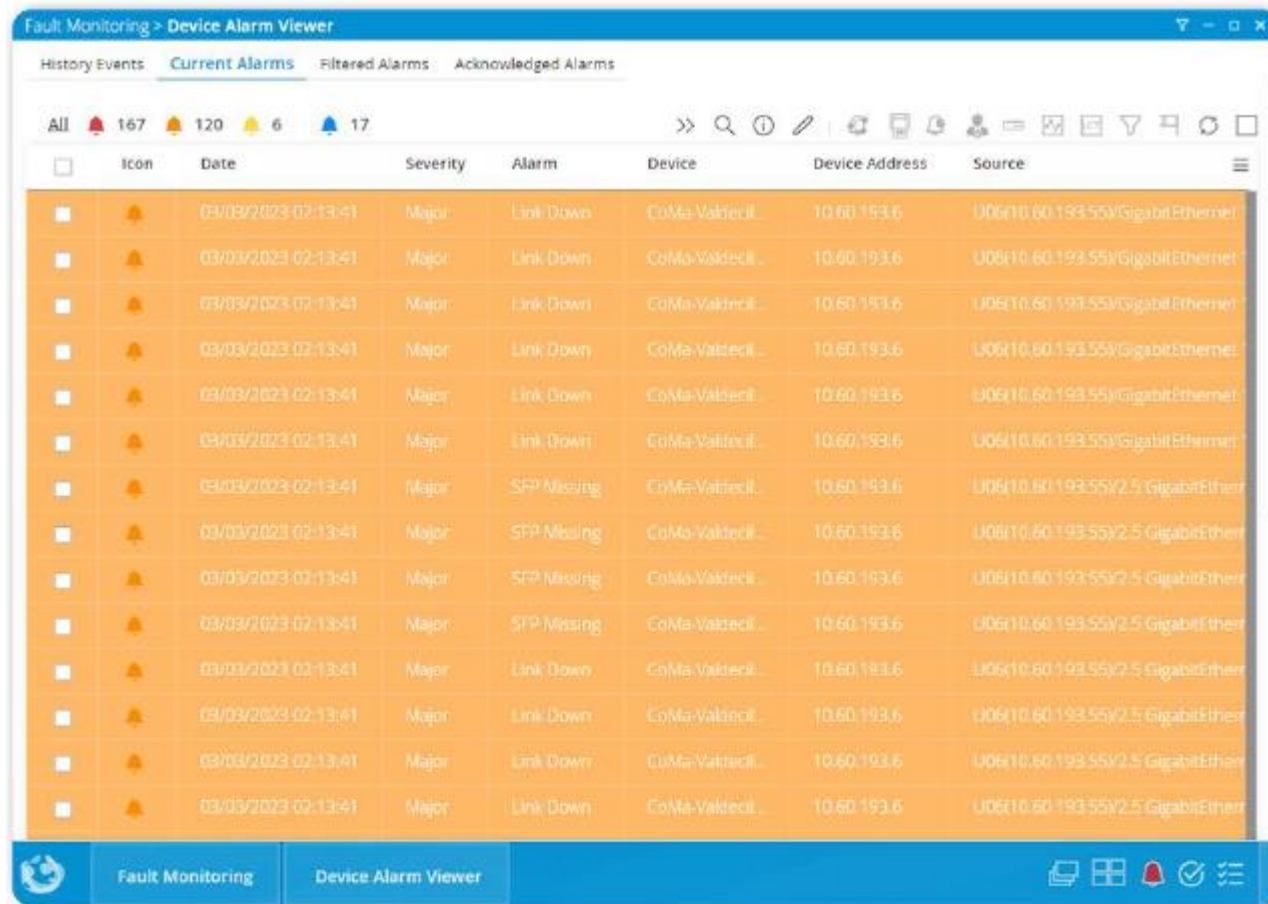
- Network Inventory
- Advanced Analytics
- Reporting
- Integration

## **P** PERFORMANCE MANAGEMENT

- Historical Statistics
- Real-Time Events
- Services performance
- Health indicators

## **S** SECURITY MANAGEMENT

- Auditor
- User management
- Log activity
- High availability



The screenshot shows a web interface titled 'Fault Monitoring > Device Alarm Viewer'. It features a navigation bar with tabs for 'History Events', 'Current Alarms', 'Filtered Alarms', and 'Acknowledged Alarms'. Below the navigation bar, there are summary statistics: 'All' (167), a red alarm icon (120), a yellow alarm icon (6), and a blue alarm icon (17). A toolbar contains various icons for search, refresh, and other actions. The main content is a table with the following columns: 'Icon', 'Date', 'Severity', 'Alarm', 'Device', 'Device Address', and 'Source'. The table contains 14 rows of data, all with a 'Major' severity and a 'Link Down' or 'SFP Missing' alarm type. The device names are 'CoMa-Valktecl...' and the device addresses are '10.60.193.6'. The source information includes 'U06(10.60.193.55)/GigabitEthernet' and 'U06(10.60.193.55)/2.5 GigabitEther'.

Icon	Date	Severity	Alarm	Device	Device Address	Source
🔴	03/03/2023 02:13:41	Major	Link Down	CoMa-Valktecl...	10.60.193.6	U06(10.60.193.55)/GigabitEthernet
🔴	03/03/2023 02:13:41	Major	Link Down	CoMa-Valktecl...	10.60.193.6	U06(10.60.193.55)/GigabitEthernet
🔴	03/03/2023 02:13:41	Major	Link Down	CoMa-Valktecl...	10.60.193.6	U06(10.60.193.55)/GigabitEthernet
🔴	03/03/2023 02:13:41	Major	Link Down	CoMa-Valktecl...	10.60.193.6	U06(10.60.193.55)/GigabitEthernet
🔴	03/03/2023 02:13:41	Major	Link Down	CoMa-Valktecl...	10.60.193.6	U06(10.60.193.55)/GigabitEthernet
🔴	03/03/2023 02:13:41	Major	SFP Missing	CoMa-Valktecl...	10.60.193.6	U06(10.60.193.55)/2.5 GigabitEther
🔴	03/03/2023 02:13:41	Major	SFP Missing	CoMa-Valktecl...	10.60.193.6	U06(10.60.193.55)/2.5 GigabitEther
🔴	03/03/2023 02:13:41	Major	SFP Missing	CoMa-Valktecl...	10.60.193.6	U06(10.60.193.55)/2.5 GigabitEther
🔴	03/03/2023 02:13:41	Major	SFP Missing	CoMa-Valktecl...	10.60.193.6	U06(10.60.193.55)/2.5 GigabitEther
🔴	03/03/2023 02:13:41	Major	Link Down	CoMa-Valktecl...	10.60.193.6	U06(10.60.193.55)/2.5 GigabitEther
🔴	03/03/2023 02:13:41	Major	Link Down	CoMa-Valktecl...	10.60.193.6	U06(10.60.193.55)/2.5 GigabitEther
🔴	03/03/2023 02:13:41	Major	Link Down	CoMa-Valktecl...	10.60.193.6	U06(10.60.193.55)/2.5 GigabitEther
🔴	03/03/2023 02:13:41	Major	Link Down	CoMa-Valktecl...	10.60.193.6	U06(10.60.193.55)/2.5 GigabitEther

## Alarms, events and services monitoring

Real-time monitoring of alarms and fault locations, both for assets (equipment, circuits, or services) geographical locations.

## Correlation and escalation

Combine, hide, compress, correlate alarms to improve diagnosis and prediction. Send by e-mail and whatsapp.

## Protocol-agnostic and multi-layered

Receive events and alarms from protocols such as SNMP, Syslog, IEC61850, ports, SFPs, circuits, services

## Alarm intelligence and configuration

Alarms priority, colour, description, actions, audible warning.

 Ticket management

 Affected circuits

 Configuration

 Filters

Topology   Config   Events   Inventory   Measurements
NTMS *by* ALBEDO   User: Aderito   Help

### Device Tracker Summary

#### Network Clcks

- Sao Paulo 12
- Campinas
- Bahia
- Fortaleza
- Itaipu
- Rio Grande

#### Time References

#### Events Log

NEXT NAME	MESSAGE	TRIGGER/OBJECT	ACTIVE TIME
Alert me when a rogue MAC address appears on network	Alert me when a rogue MAC address appears on network	34.80.00.7F:80:F3	1d 10h 13m
Alert me when a rogue MAC address appears on network	Alert me when a rogue MAC address appears on network	AC:64:63:2C:C3:90	3d 30h 5m
Alert me when a rogue IP address appears on network	Alert me when a rogue IP address appears on network	193.112.25	10d 22h 39m
Alert me when a rogue IP address appears on network	Alert me when a rogue IP address appears on network	193.29.40.200	14d 2h 45m
Alert me when a rogue IP address appears on network	Alert me when a rogue IP address appears on network	193.114.11	14d 6h 5m

### Topology

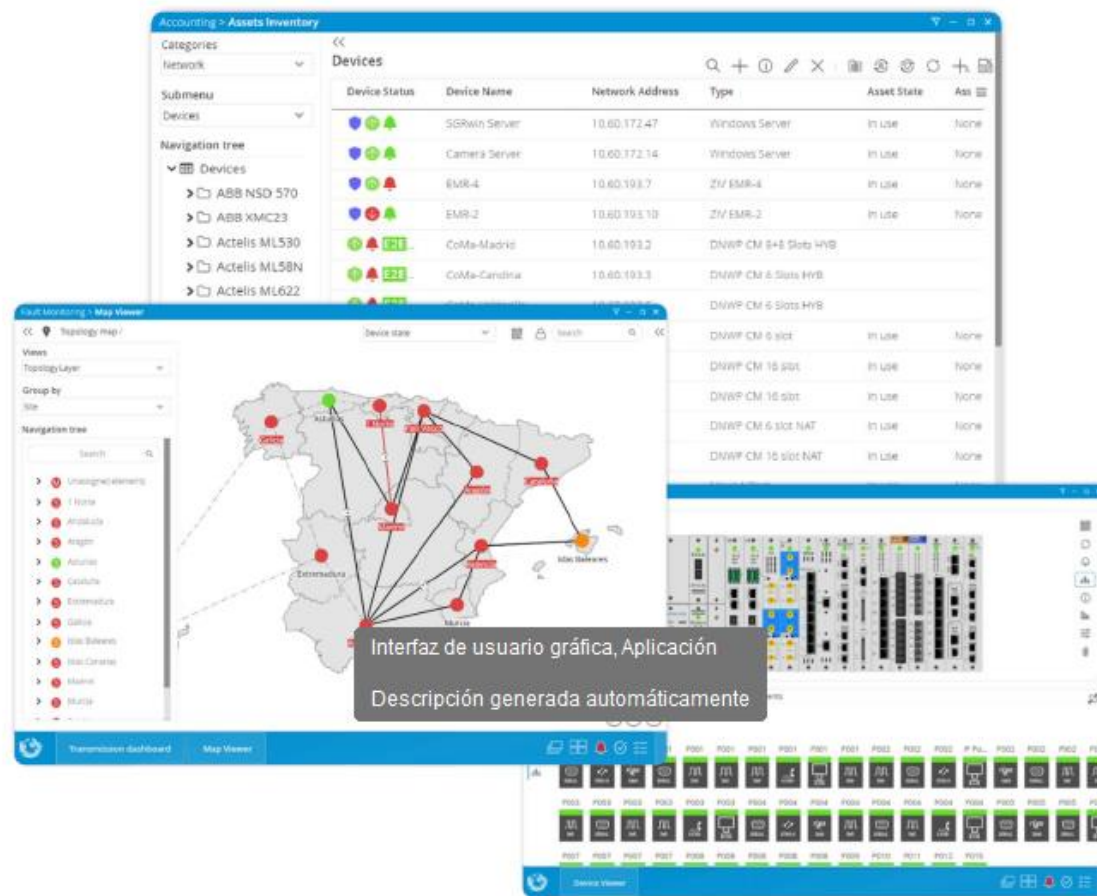
### Inventory

Device Status	Device Name	Network Address	Type	Asset State	Ass
●●●	SQLSRV Server	10.60.172.47	Windows Server	In use	None
●●●	Camera Server	10.60.172.14	Windows Server	In use	None
●●●	EMR-4	10.60.193.7	ZIV EMR-4	In use	None
●●●	EMR-2	10.60.193.10	ZIV EMR-2	In use	None
●●●	Coma-Madrid	10.60.193.2	DWPF CM 6 Slots HYB	In use	None
●●●	Coma-Cardina	10.60.193.3	DWPF CM 6 Slots HYB	In use	None
●●●	Coma-Valecilla	10.60.193.6	DWPF CM 6 Slots HYB	In use	None
●●●	Coma-Circus-01	10.60.172.15	DWPF CM 6 slot	In use	None
●●●	Coma-Circus-02	10.60.172.15	DWPF CM 16 slot	In use	None
●●●	Coma-Circus-03	10.60.172.15	DWPF CM 16 slot	In use	None
●●●	CM_Dual_GE	10.60.172.15	DWPF CM 6 slot NAT	In use	None
●●●	CM_Native_ICE	10.60.172.15	DWPF CM 16 slot NAT	In use	None
●●●	MOXA-S-PTCAR	10.60.193.50	Moxa NPort	In use	None
●●●	MOXA-NP500	10.60.172.15	NPort8	In use	None
●●●	Ruggedcom Rv1501	10.60.172.15	Rv1501	In use	None

### Measurements

### Configuration

© ALBEDO Telecom - All rights reserved



## Full Network Inventory

- Network elements (devices, cards, ports, SFPs, VLANs, subnetworks, servers, edges)
- Maps (topology, family, access layers, IP, personalized maps, regions, stations, links)
- Circuits (PDH, SDH, MPLS-TP services, XC tables, tunnels, pseudo wires, EVCs, ECEs etc.)

## Assets status and documentation

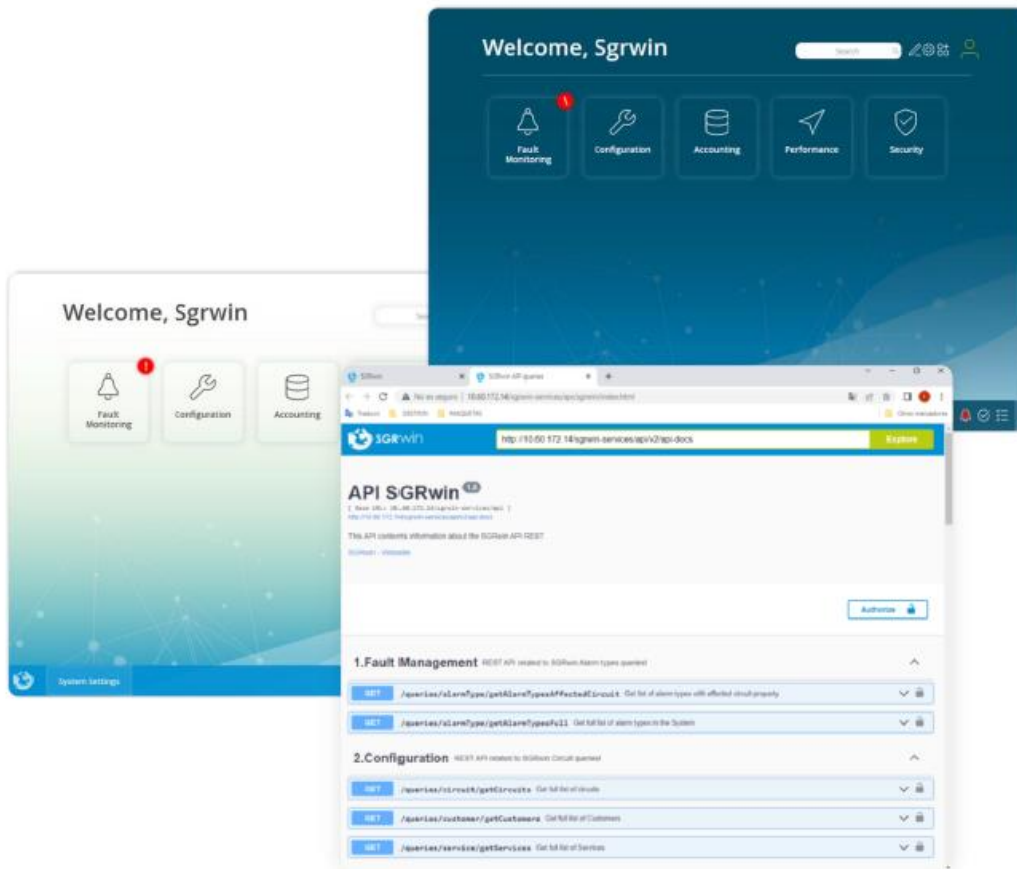
Manage the status of your assets: installed, stock, transit or under maintenance.  
Repositories (images, manuals, firmware, LCT)

## Network topology

Display all assets on a single map with various logical layers based on family, technology (access, transmission, IP), or topology.

## Customize your views

Create, share and filter your own views.



## System and user customization

SGRwin allows for system customization, giving users the ability to change colors, wallpaper, and corporate logos. It also offers customization options for desktop and views, as well as sharing options.

## Accessible environment with an API

Enrich your inventory by accessing your current asset information through our REST API or ODBC.

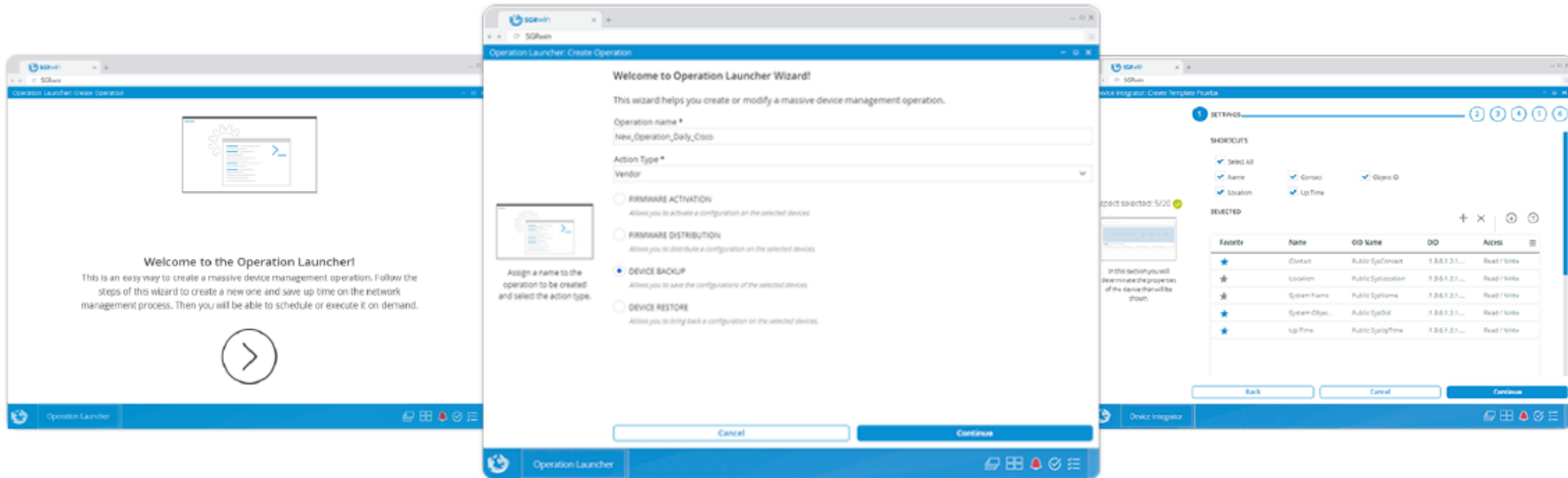
## Management of scheduled tasks

Add system diagnostics and maintenance tasks.

## Integration with corporate systems

Integration with mail servers, ticketing systems, LDAP, and other external tools can enhance the functionality of the system.





## MIB Browser

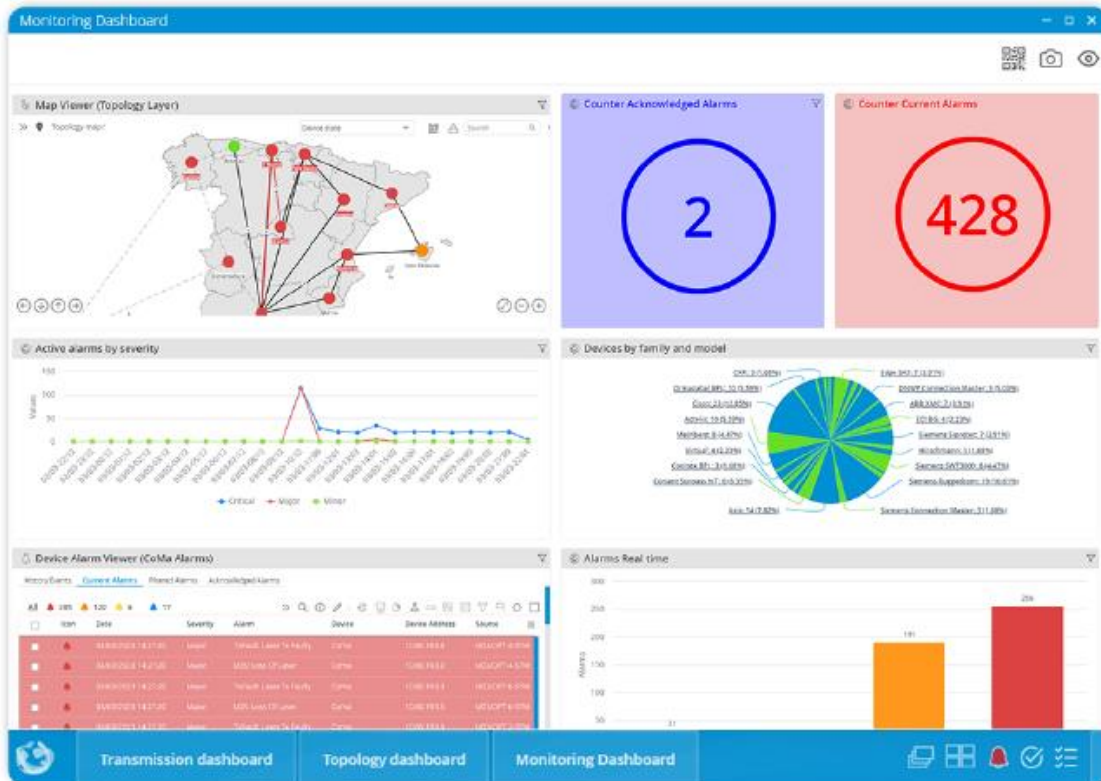
Manage your v1, v2 and v3 equipment and execute operations.

## Device Integrator

Create a template for a new device model in just a few minutes.

## MIB Compiler

Compile your MIBs to improve system efficiency.



## 360°view organized by business units or regions

- Organize your network into multiple segments and user groups, manage networks and clients through one centralized system.
- Customize your dashboards using built-in FCAPS components and share them.
- Get real-time insights into THE business performance.

## 360°view of each network element

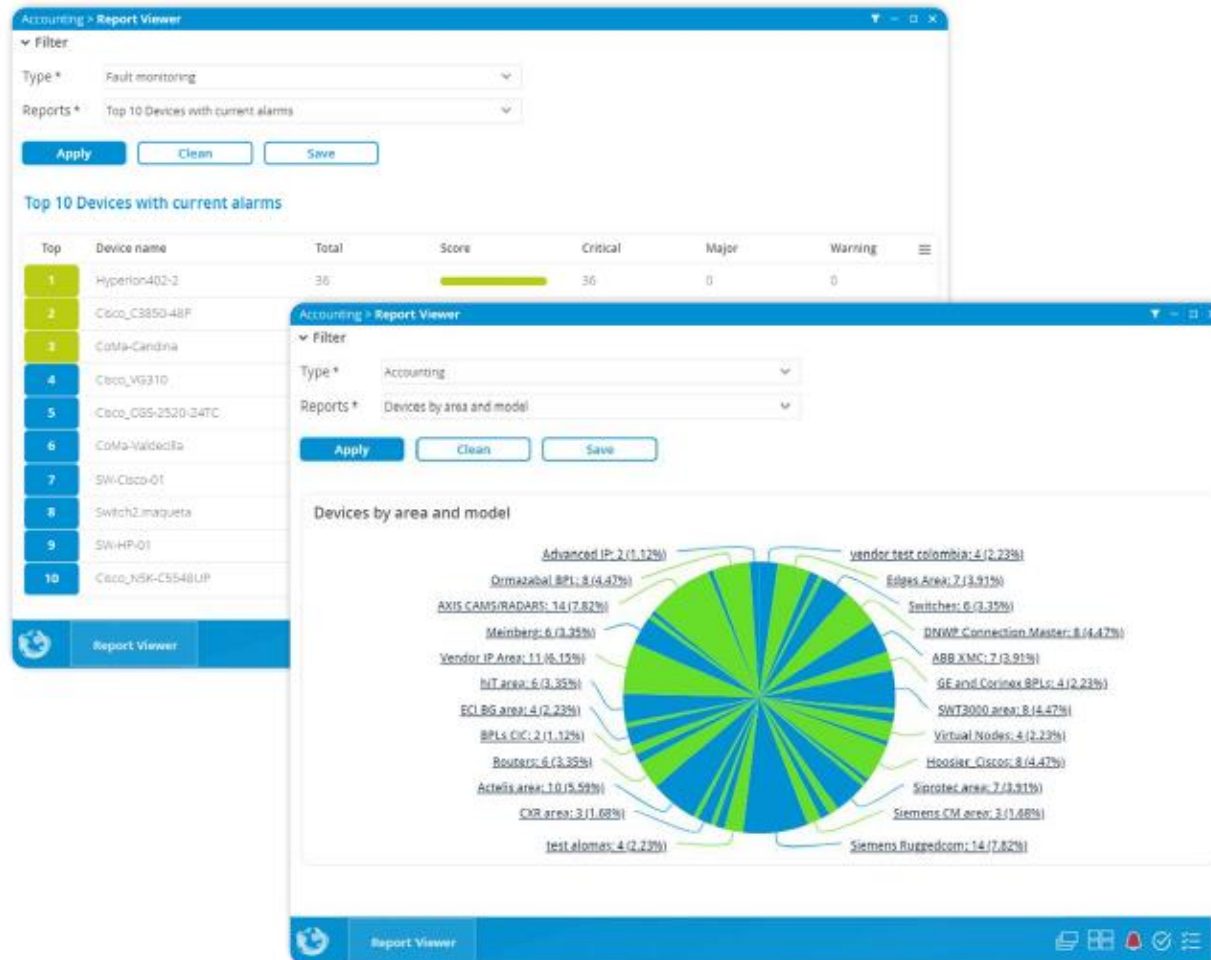
Create dashboards to monitor network assets such as equipment, links, circuits or stations.

## Personalized dashboards

We can create custom dashboards tailored to your specific information needs.

## Personalized FCAPS reports

Obtain detailed reports on network performance and usage, presented in graphs, tables, or counters for various parameters.



## Personalized FCAPS reports

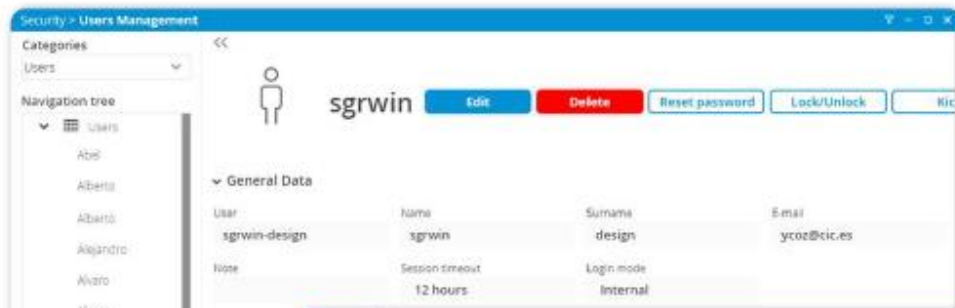
Obtain detailed reports on network performance and usage, presented in the form of graphs, tables, or counters for various parameters.

## Personalized reports

Customized reports can be generated to provide clients with the specific information they require about their assets, including equipment, circuits, or services.

## User, group, role and permissions management

Our tool enables you to improve your network security and compliance with regulations. Control everything on your network. Assign R/W permissions by asset type, application or LCT. Connect to your corporate LDAP.



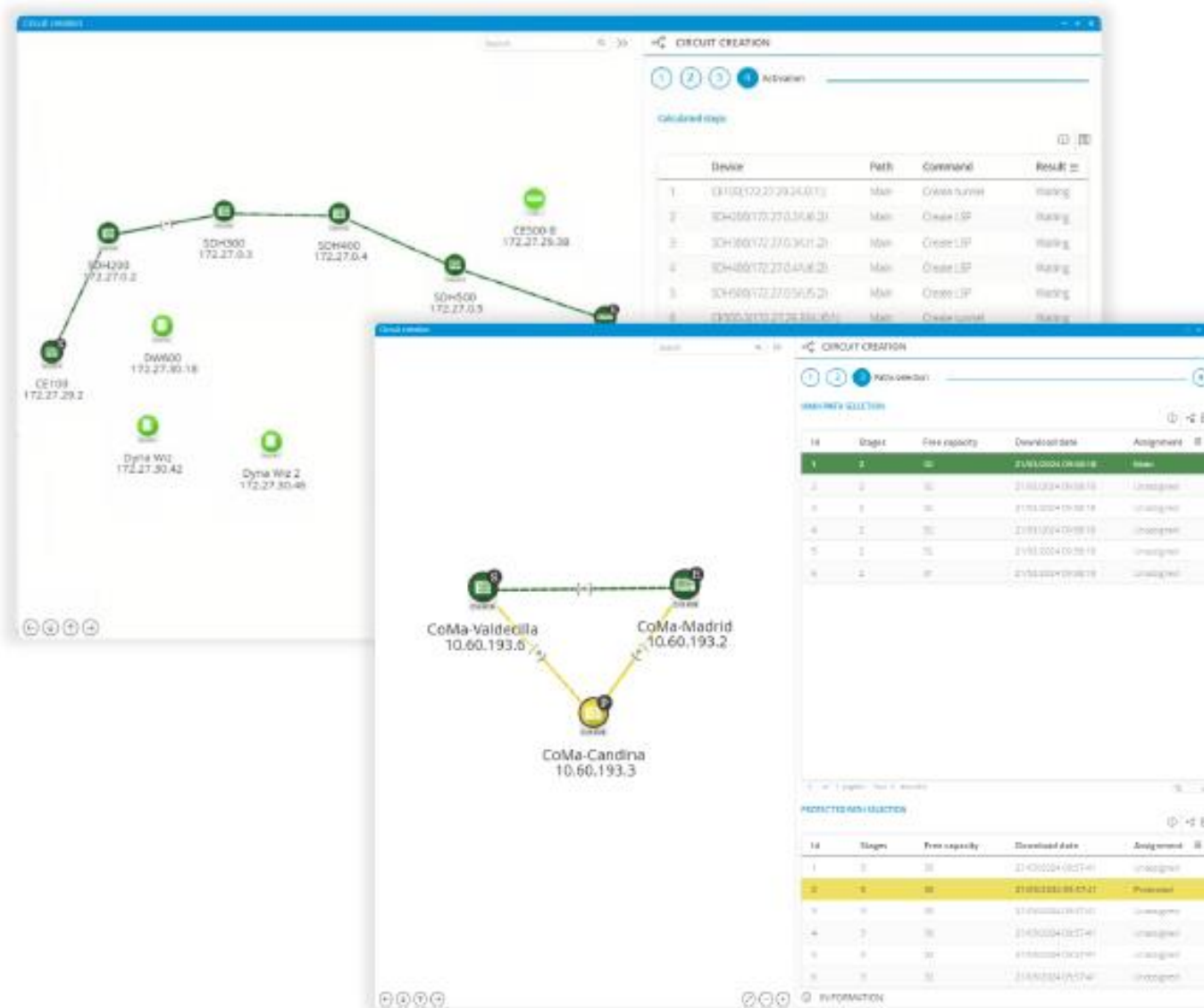
Protecting your network against security threats and risks

The screenshot shows the 'Security - Auditor' interface with a table of system events. The table has columns for Description, Category, Element, Operation, User, and Date.

Description	Category	Element	Operation	User	Date
The user has logged in	Security	User	Login	sgrwin-design	03/03/2023 09:56:45
The user has logged in	Security	User	Login	dpordomingo	03/03/2023 09:44:52
The user has logged in	Security	User	Login	Administrator	03/03/2023 09:07:23
The user has logged in	Security	User	Login	Administrator	03/03/2023 08:30:57
The user has logged in	Security	User	Login	sgrwin-design	03/03/2023 08:24:16
A backup is executed	Administration	Export	Execute now	bvidal	27/01/2023 10:09:12
The user has logged in	Security	User	Login	bvidal	27/01/2023 10:58:50
The user has logged out	Security	User	Logout	mcoaba	27/01/2023 10:57:48
The user has logged in	Security	User	Login	alomas	27/01/2023 10:57:38
The user has logged in	Security	User	Login	mcoaba	27/01/2023 10:56:49
The user has logged out	Security	User	Logout	mfernandez	27/01/2023 10:56:31
The user has logged in	Security	User	Login	mfernandez	27/01/2023 10:54:40
The user has logged out	Security	User	Logout	clopez	27/01/2023 10:54:19
The user has logged in	Security	User	Login	clopez	27/01/2023 10:52:35
The user has logged out	Security	User	Logout	fperez	27/01/2023 10:52:14

## Auditor

Control the actions performed in your system with activity logs of each user or group. Also, you will be able to track last actions performed from the system.



## Circuit provisioning

Create, modify, protect, eliminate circuits forwarding of commands to the affected equipment automatically

## Circuit tracing

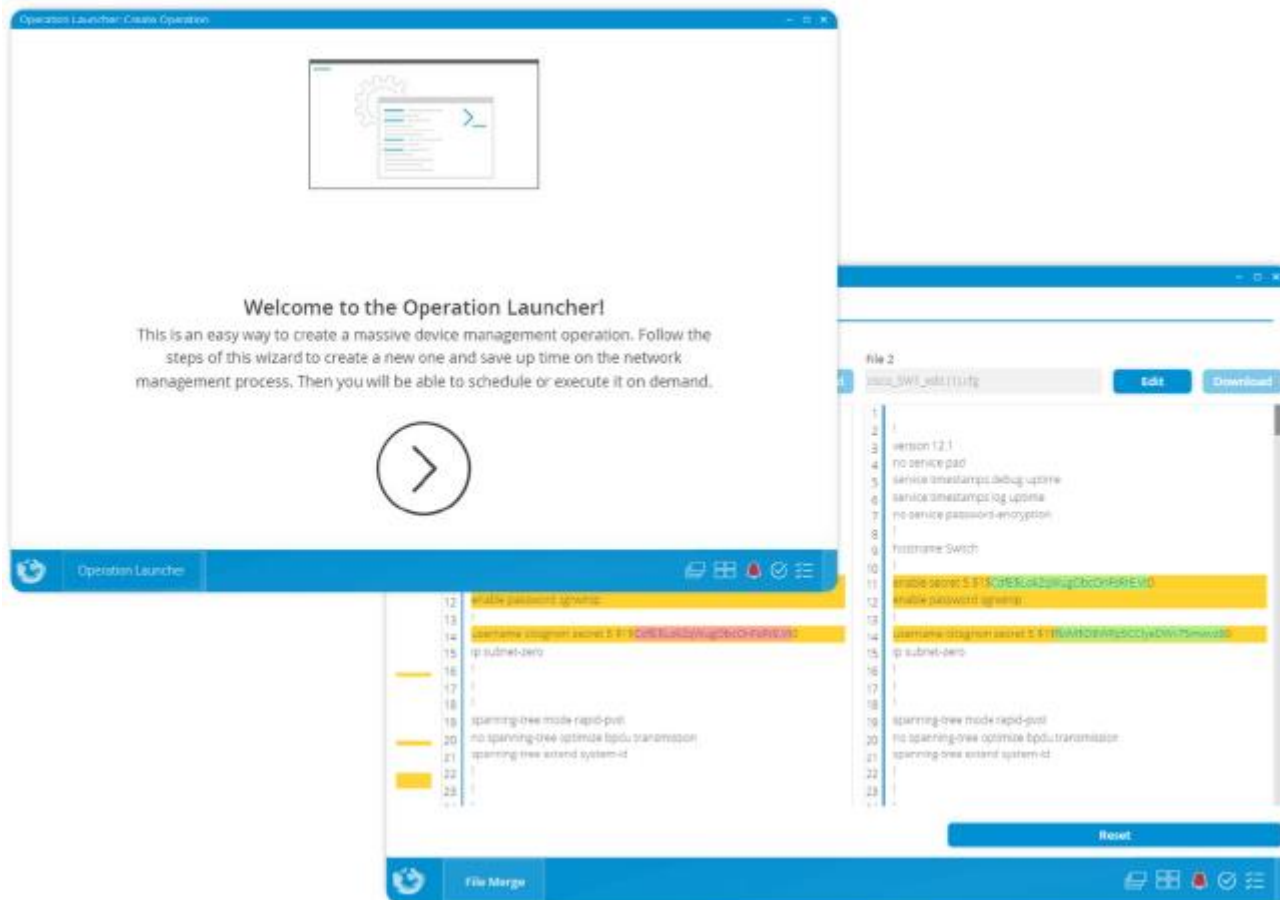
MPLS-TP, SDH/SONET and PDH resources can be displayed allowing the user to know where the circuits are passing through.

## Automatic XC download

Eliminate worries and activate the automatic download of XC tables from network devices to get internal configuration of the devices.

## Circuit inventory

Register all the services of your network, properties and endpoints of the services.



## LCT and Terminals

Operate 100% of your equipment by launching vendors' management interfaces directly from our system or utilize our proprietary Q1 or SNMP terminals.

## Massive Operations Launcher

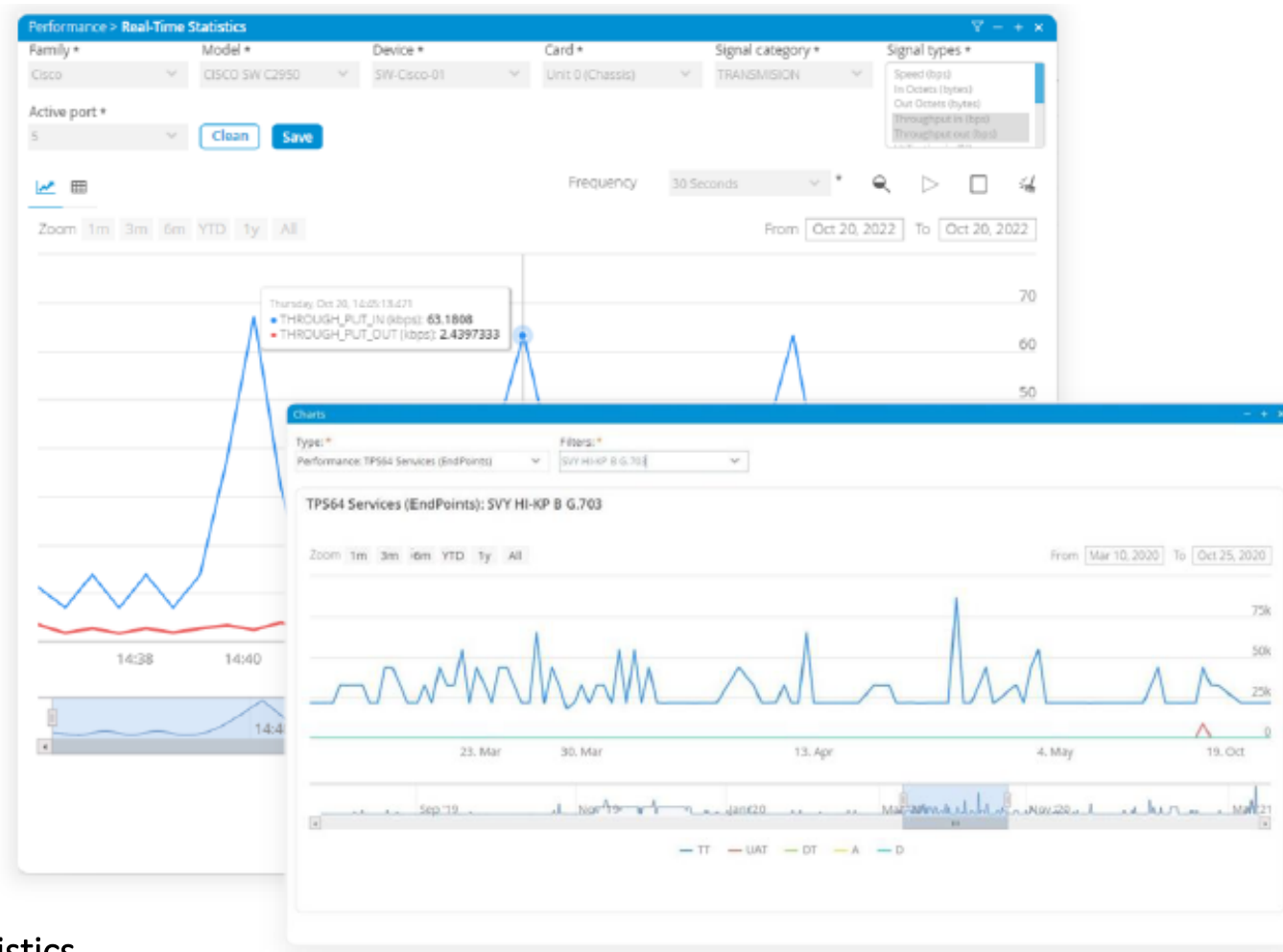
Execute bulk operations across multiple devices simultaneously, using preloaded scripts or predefined actions, either manually or on a scheduled basis. These operations can include firmware A/D, backups/restoration of device configurations.

## History and Comparison

Backup history for each device as needed. Compare two configurations and send a new configuration to the device.

## Repositories

Store, edit, download, and share your documentation, firmware, backups, scripts, or LCTs related to specific devices or items.



## Statistics

Collect real-time statistics and signals from devices, cards, ports, and circuits.

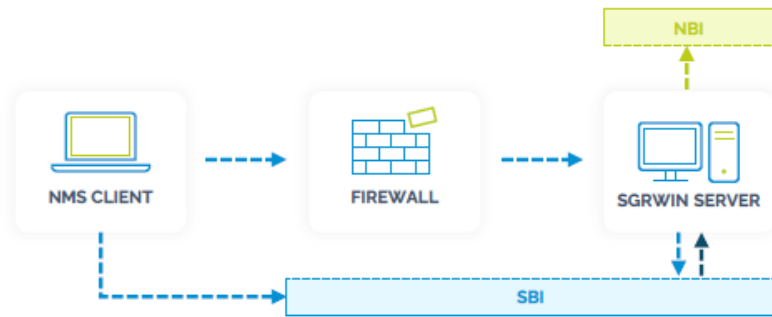
## Signal categories

You can select multiple statistics and visualize all the data according to the time range you need.

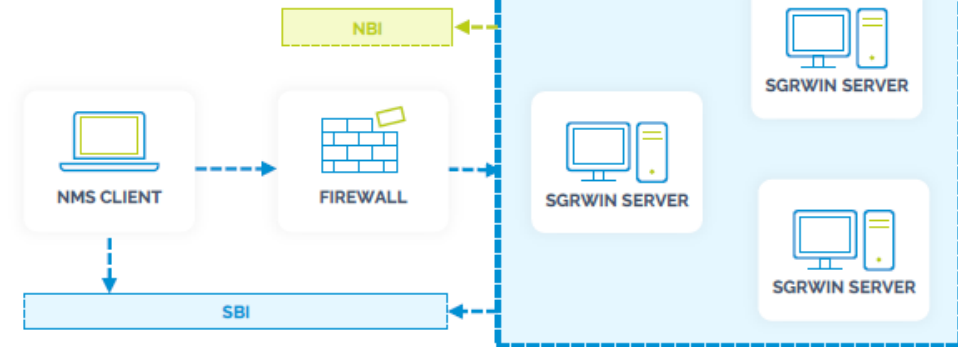
## Network performance

Collect data values at customizable frequencies to optimize network performance.

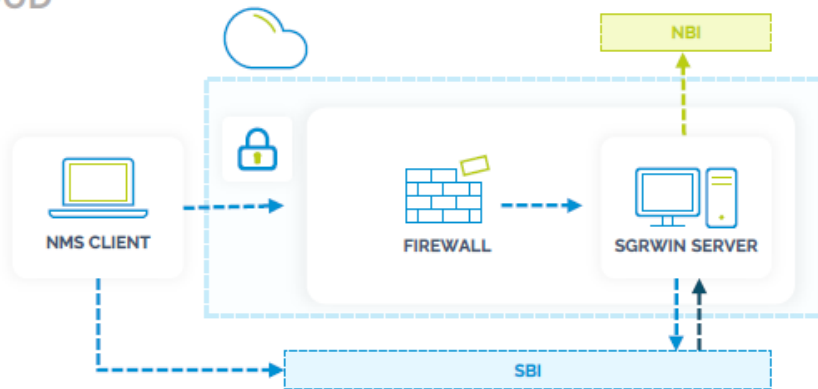
## CENTRALIZED



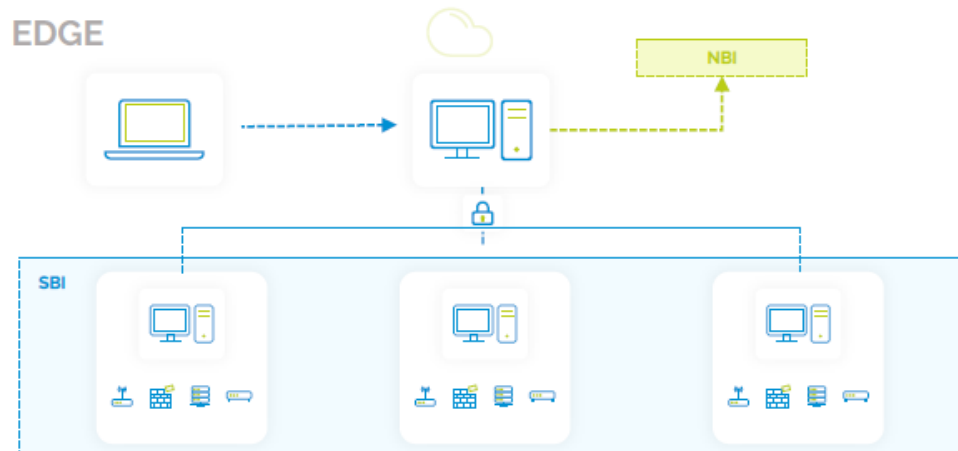
## DISTRIBUTED



## CLOUD



## EDGE





## PRODUCTION (PRIMARY)

### SERVER

SO	Windows server 2019/2022
Procesador	6 Core 2,1 GHz Intel
Memoria RAM	64 GB
CPU	2 TB

### ADD ON: Advanced BI

SO	Ubuntu 22
Procesador	4
Memoria RAM	16 GB
CPU	30 GB

### ADD ON: Historical database

SO	Ubuntu 22
Procesador	4 Core 2,1 GHz Intel
Memoria RAM	64 GB
CPU	10 TB

## PRODUCTION (SECONDARY)

### SERVER

SO	Windows server 2019/2022
Procesador	6 Core 2,1 GHz Intel
Memoria RAM	64 GB
CPU	2 TB

### ADD ON: Advanced BI

SO	Ubuntu 22
Procesador	4
Memoria RAM	16 GB
CPU	30 GB

### ADD ON: Historical database

SO	Ubuntu 22
Procesador	4 Core 2,1 GHz Intel
Memoria RAM	64 GB
CPU	10 TB



## POWER & ELECTRICITY +48



## OIL/GAS & MINING 20



## RAILWAYS 12



## WATER 3



## AIRPORT 2



## ROAD 2



## GOVERNMENT 7



## TELECOM & TV 10





**FULL INTEGRATION WITH EXISTING SYSTEMS**  
Compatible with main tools and systems already installed and running in our clients

## OT NETWORK

SDH, PDH, MPLS-TP, TETRA, MSH, Q1, Q3, QD2, GSM/LTE, IEC 61850 (GOOSE, MMS, SV), 101, 104, Modbus etc.

## IT NETWORK

IP, Ethernet, IP-MPLS, WMI, Syslog, SFTP, SSH, SNMP (V1,V2,V3), IoT, SAI, HTTPS etc.

**INTEROPERABLE AGNOSTIC SOLUTION**  
Supports numerous protocols for both IT and OT networks, enabling for a convergence.



**MULTI-VENDOR AND MULTI-TECHNOLOGY**  
SGRwin can reach and manage more than 100 different vendors, directly or by their own manager

That's all



**ALBEDO**  
Telecom  
*the Path to Excellence*